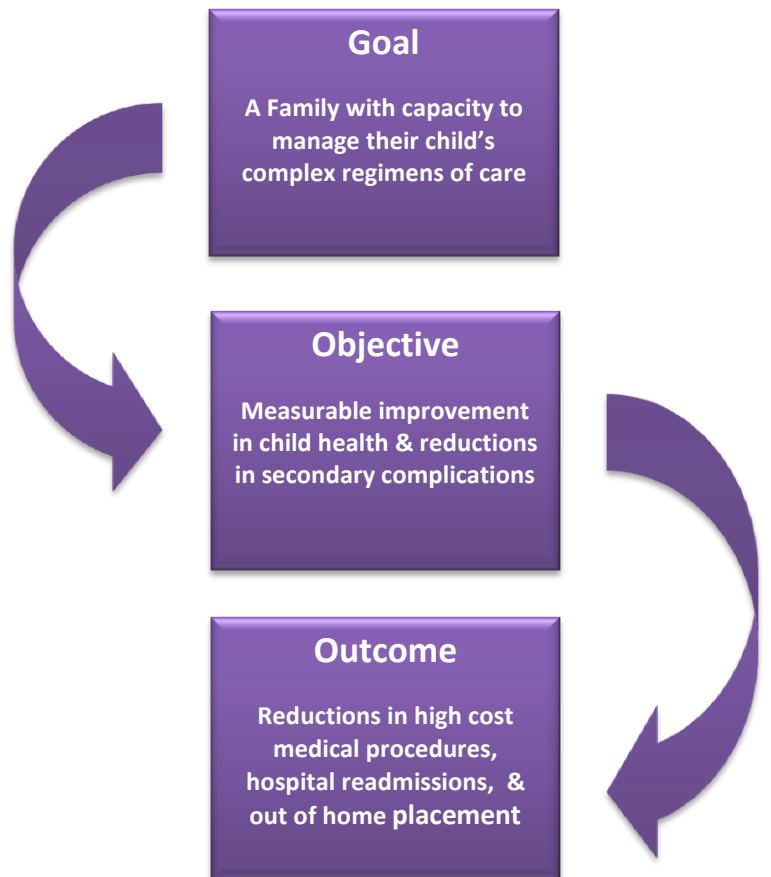




**Early Intervention & Family Support for Children with Medical Complexity**

Child Diagnoses 2013 Early Intervention Discharges
Anomalies of aortic arch
Asthma
Autism
Brain Injury
Cerebral Palsy*
Chondrodystrophy
Cri-Du-Chat Syndrome
Diabetes Type 1*
Dysplastic Kidney
Encephalocele
Epilepsy
Failure to Thrive*
Gastroschisis
Global Developmental Delay
Hypertelorism of orbit
Kidney Transplant
Mircocephalus
Myasthenia gravis
Myotonic Dystrophy
Pelizaeus-Merzbacher Disease
Renal Failure
Rickets
Severe Developmental Delays
Sex Chromosome Anomalies
Shaken Baby Syndrome
Sickle Cell Anemia
Spina Bifida
Sturge-Weber Syndrome
Syndromes of Diencephalo-hypophyseal Origin
Trisomy 9 Mosaic Syndrome
Trisomy 21 (DNS)
*Most Common Referral Diagnoses



**Average Per Child Per Month Medicaid Cost**

**Before Childkind's Services: \$4,900**  
**After Childkind's Services: \$2,510**

237 children with medical complexity and their families were referred for services in 2013. 126 were provided services. The 56 children whose families completed early intervention services in 2013 were included in the DCH study.